



TK-120

KL8257-2



KL8142

46-2017K

46-2017K

92026

3-3

KL8005-1

926



L0226

KL8012-4

LP026

3-2

KL8005



1D028

3-11

KL8062-1



3-12
19026

KL8066



LP026

3-6

KL8012



HM 1103 (TK119)

KL8260-2

LD026

2-114

KL8087-3

3-15

KL8126-1

23HM1103 (TK119)

KL8260



KL8259-2

1 75X7



3-12
100210

KL8066



LP026

2-10

KL8087-1

91117
5-4



KL8206-1 椰殼灰
8226-1

8226-1



KL8062



92026

KL8004

3-13



KL8038

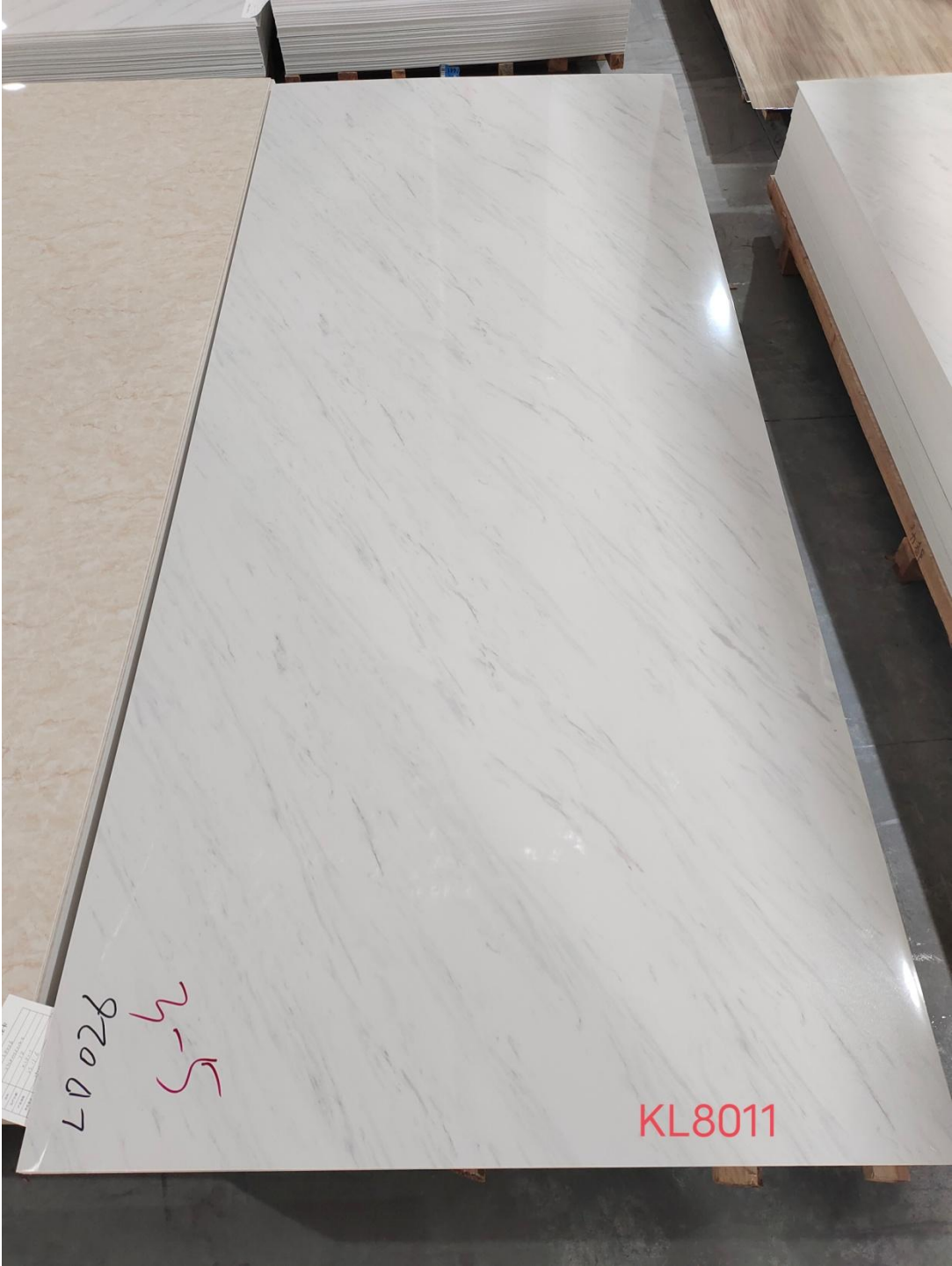
LD026

3-4

KL8010

13

14



KL8011

LD026
S-4

KL8011



2-4
150x76

KL8012



KS1748





KS3083A



KL8038-1



KL8160



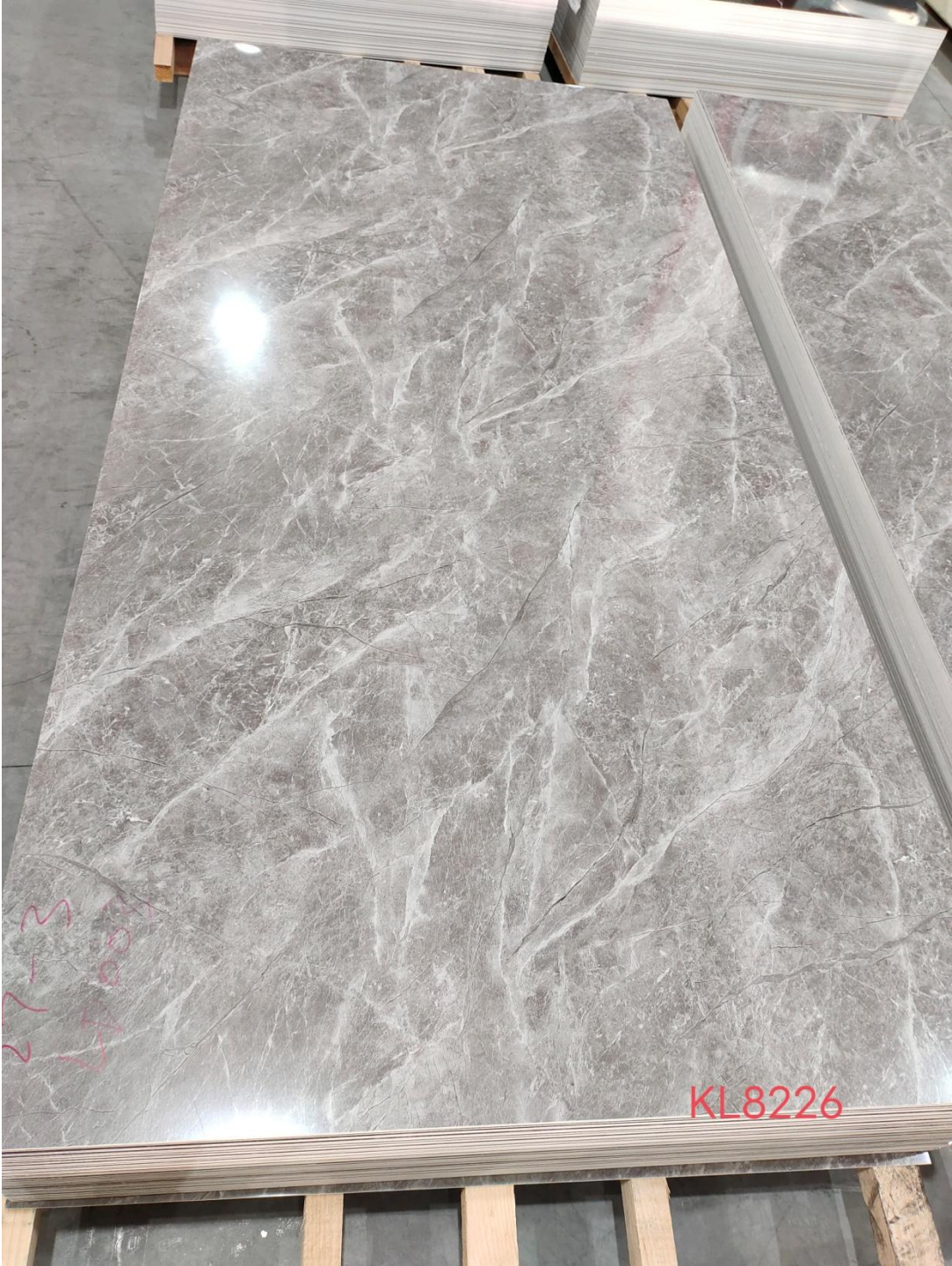
13-2023TK-PM

KL8209



13-2023TK-PA

KL8065-1

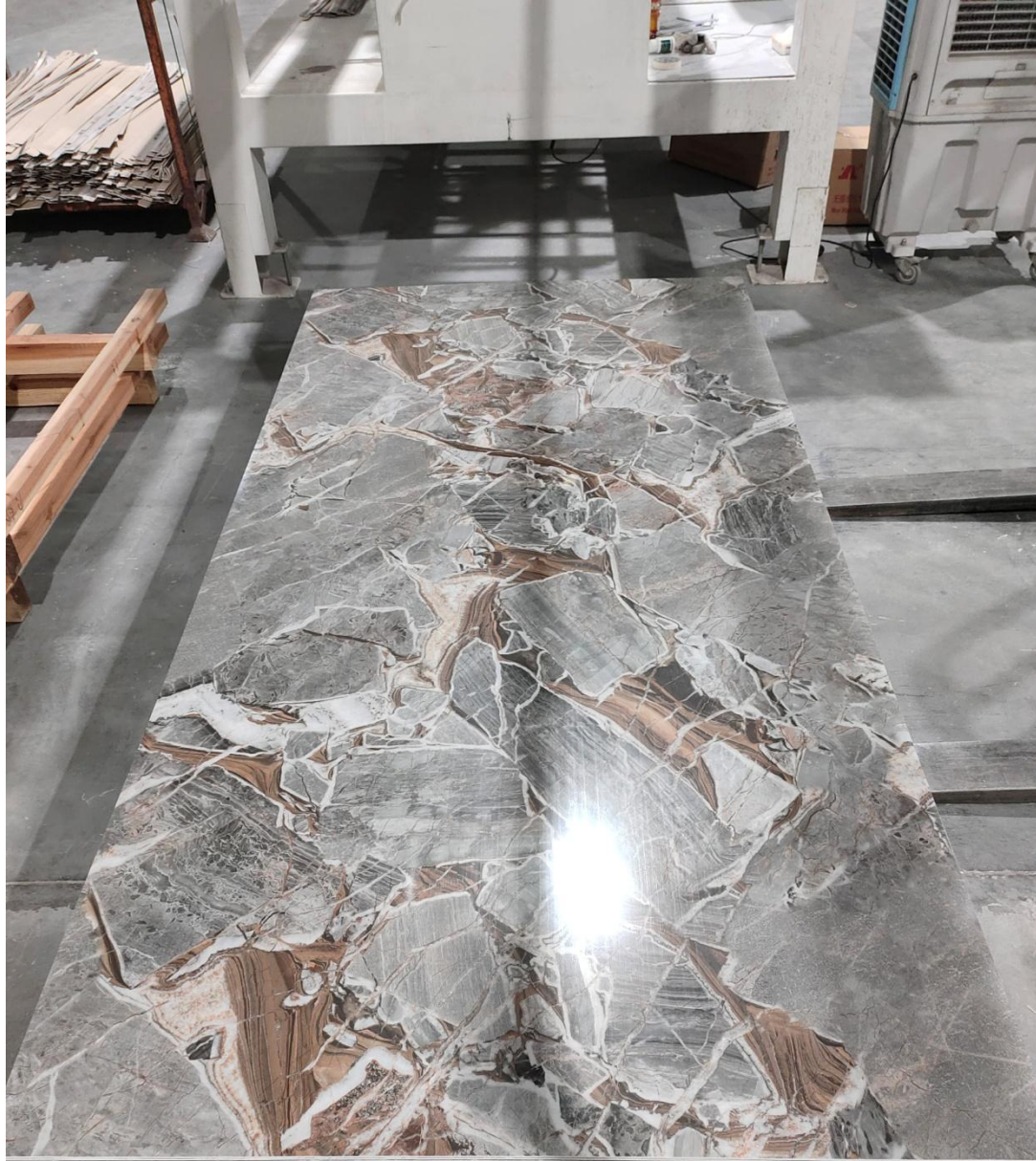


KL8226

27-3
1000



KL8233



KS3064-1



KS3076



KS3087-1B



KS3085A



KL3267



KS3056-1A



LD002

KL8160



KL8239

大理石产品证书
证书编号: KL8239
产品名称: 大理石
规格: 2600x1200x20mm
重量: 520kg
产地: 中国
日期: 2023.10.10

大理石产品证书
证书编号: KL8239
产品名称: 大理石
规格: 2600x1200x20mm
重量: 520kg
产地: 中国
日期: 2023.10.10



KL8008



KL8038-1

810x17



KL8178-1



KL8226-1



KL8087-1



KL8002



KS3045B



LP022

KL8088



20022

KS8004-2

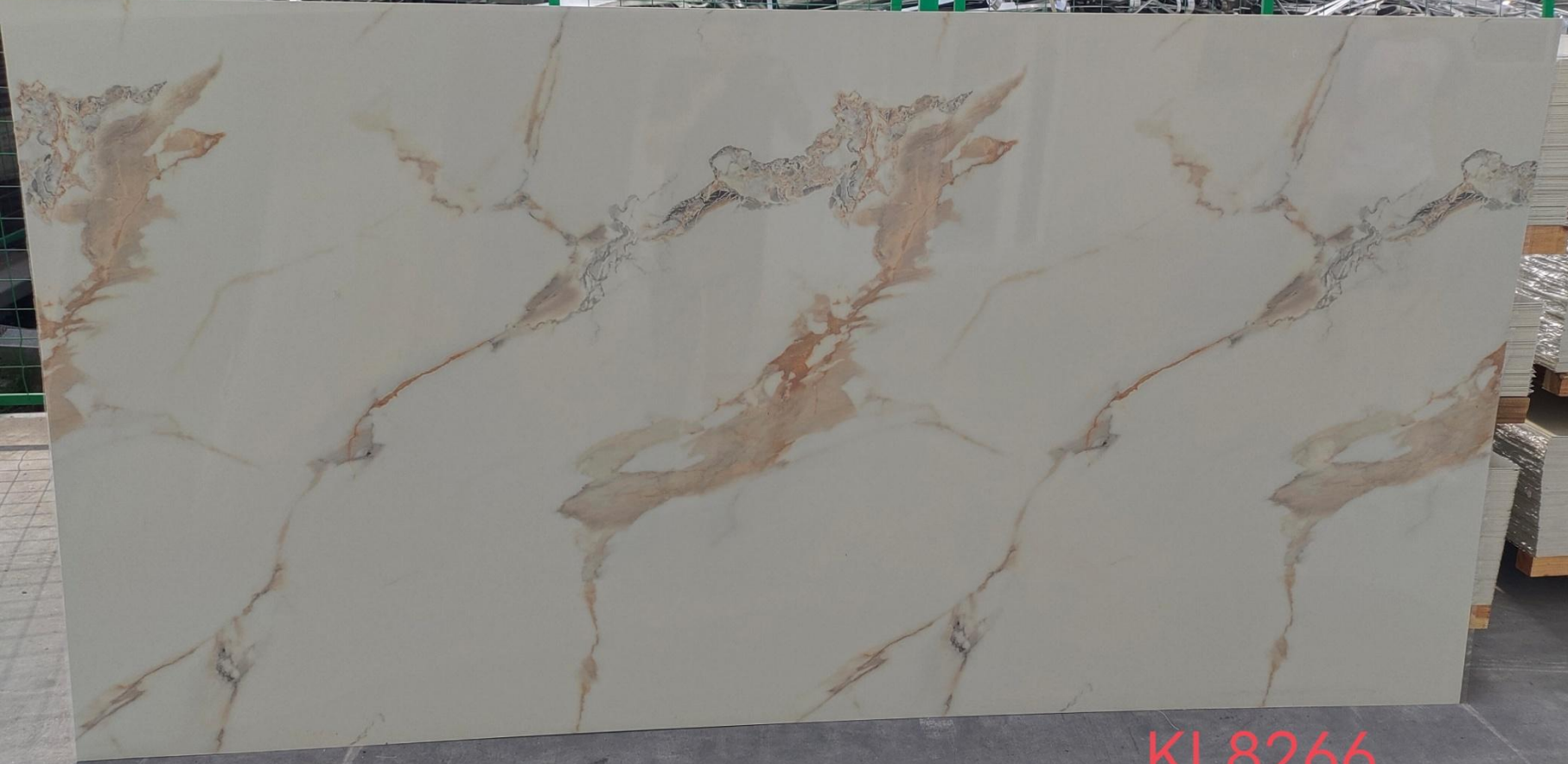


LD018

KS3053-2A



KL8228



KL8266



KS3013



KL8263



KL8025

钢筋

钢筋

KL8231-1



KL8066



KL8025



KL8231



KL8070



KS3038A



KS3053-1B



KL8240



KL8088



KL8263



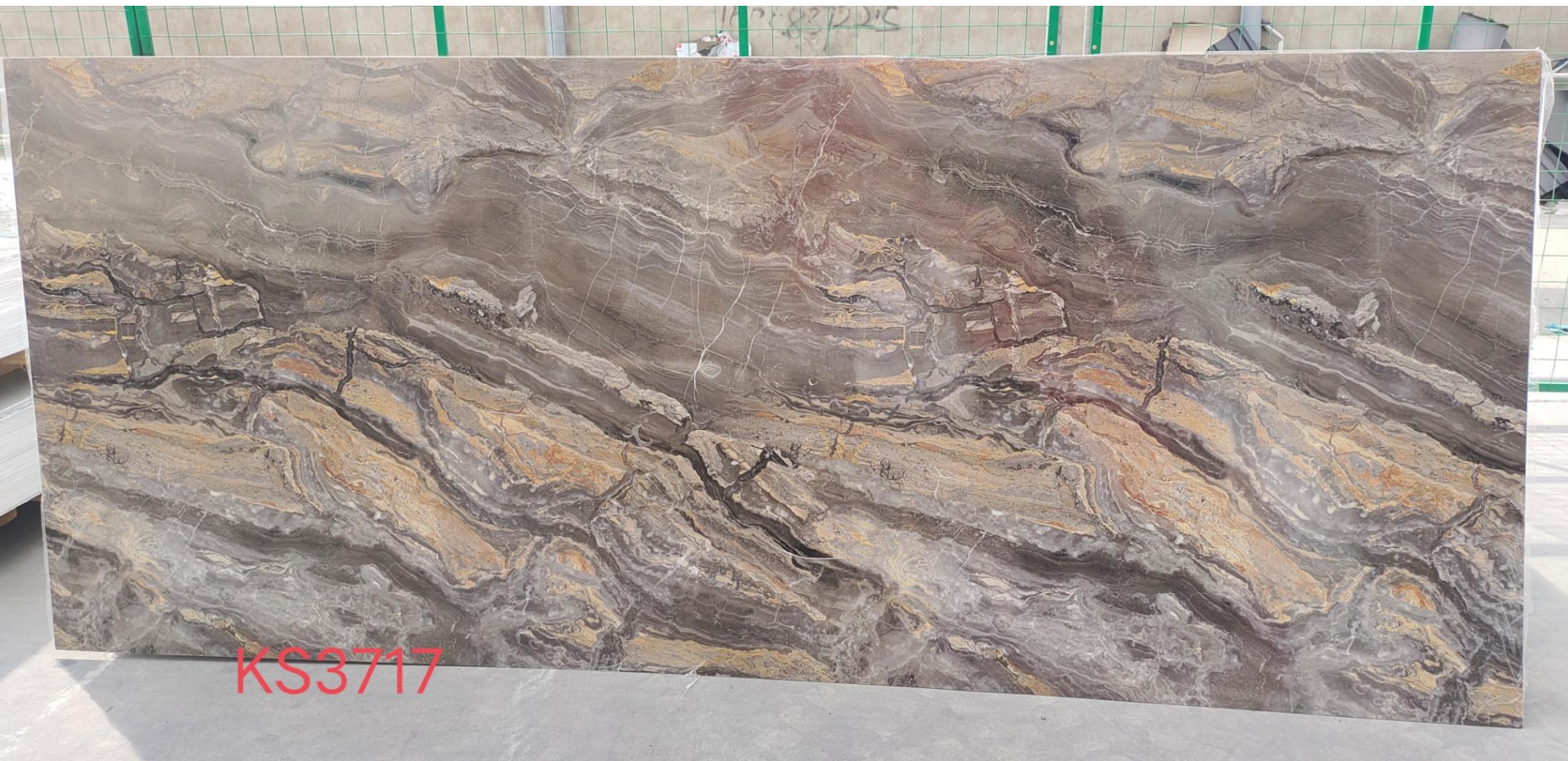
KL8230



KL8146



ZT8818



KS3717